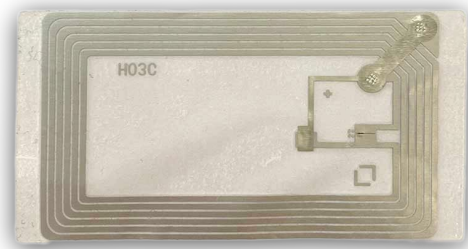


RFID LABEL WToo6

MARKETS:



Industry



Logistics

COLOUR:



Transparent

The WToo6 is a flexible, rectangular wet inlay made from PET, a thermoplastic material known for its high mechanical strength and wear resistance. It **measures 86 x 46 mm with an inlay of 75 x 45 mm**. This transparent inlay can be applied to non-metallic surfaces using its adhesive backing. The WToo6 is an NFC tag available in **HF (High Frequency) with the ICODE SLIX chip**.

MARKETS

The WToo6 is designed for **asset management** applications



frequency 13,56 MHz

RFID features

Chip	Memory	ISO Standard	NFC Standard
NTAG213	144 bytes - UID: 7 bytes	ISO 14443 A	Type 2 - tag compliant

Technical specifications

Application	Non-metal surfaces
Dimensions	86 x 46 mm, inlay: 75 x 45 mm
Material	PET
Weight	0.5 g
Application method	Adhesive
Operating temperature	-10°C ~ + 50°C
Storage temperature	0°C ~ +50°C

Customisation

Colour	Transparent
---------------	-------------

